

U. S. DEPARTMENT OF THE INTERIOR
ALASKA ROAD COMMISSION
Anchorage District

TABLE OF CONTENTS

Item	FINAL CONSTRUCTION REPORT	Page Number
Location	EKLUTNA RIVER BRIDGE, MILE 25.9, GLENN HIGHWAY	
Description	Construction of Steel Arch Bridge	1
Contract Data	Contract No. I-arc-4299	2
Construction	Third Judicial Division, Territory of Alaska	3-8
Engineering		9-10
Laboratory Reports on Concrete Cylinder		11
Statistics of Contract Cost		12
Reasons for Overruns		13
Appendix (Photographs)		

By: Kenneth R. Schedler
Kenneth R. Schedler
District Office Engineer

Approved: E. J. White
E. J. White
District Engineer

Date: JAN 29 1954

DESCRIPTION

This report covers the construction of the Eklutna River Bridge, Project I-arc-4299, at Mile 25.9, Glenn Highway, Section A of the Third Judicial District.

The project consisted of a 170-foot steel arch span with one 50' and one 35' I-Beam span approaches with a 24-foot roadway. The construction was to utilize the two old arches and structural steel of the bridge being replaced and a new arch and structural steel interjected with splicing for a 24-foot roadway with a H-20 classification.

Construction started November 1, 1950 and completed July 5, 1952. Work was suspended three times: twice for winter and once for lack of material.

The reconstruction cost of this contract was \$89,824.64 with an average cost per foot of \$352.25.

This project replaces a single lane arch span over Eklutna River, a definite road hazard, considering a daily vehicle count of 1,200 to 2,300 cars per day depending upon season.

Contract payments only

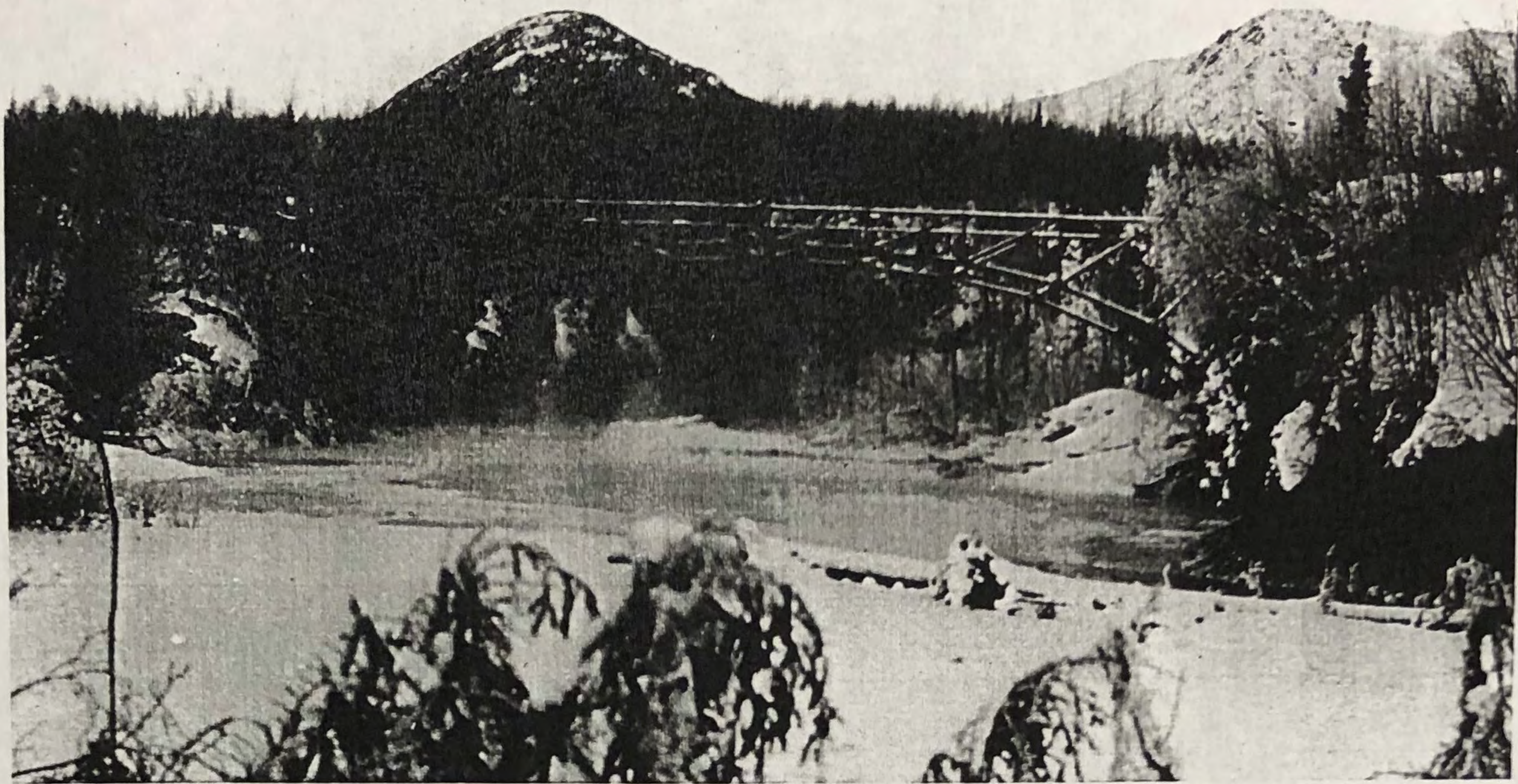
WJM

Reproduced at the National Archives at Seattle



Reproduced at the National Archives at Seattle





Status of Eklutna River Bridge March 1952

[RG 30-1948]



Completed Bridge (Picture taken January 21, 1954)

[RG 30-1949]



[RG 30-1953]

Looking across river at the completed structural arrangement of Anchorage side of bridge.



[RG 30-1954]

Palmer side of the Bridge

(Note the footings and excellent bearing material of solid rock.)

NO!

Rock is badly fractured and subject to stream erosion
WJL